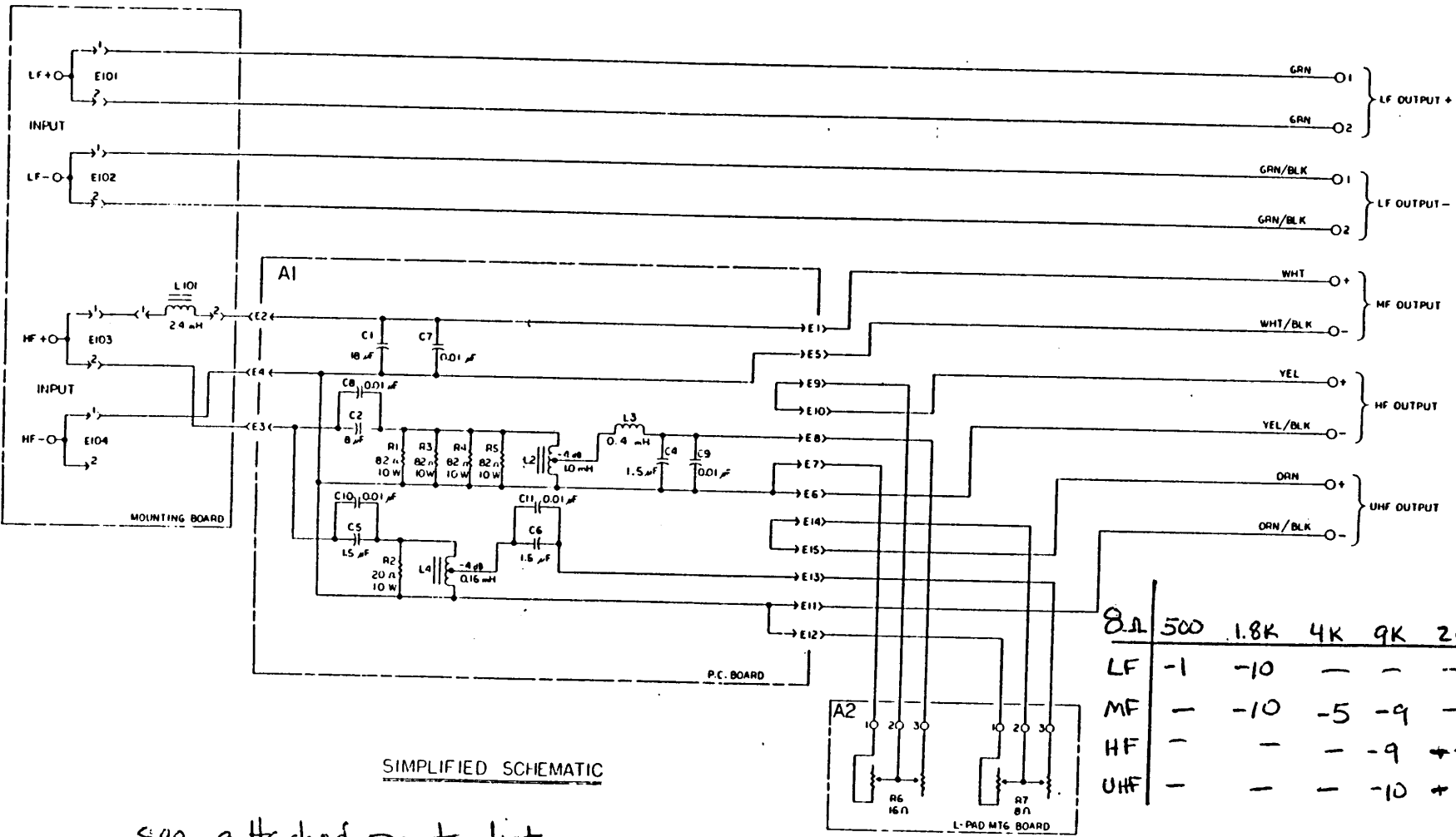


REVISIONS						
CHG	LR	DESCRIPTION	DIFF	CHK	DATE	APP
		SEE SHEET 1				



SIMPLIFIED SCHEMATIC

	8Ω	500	1.8K	4K	9K	20K
LF	-1	-10	-	-	-	-
MF	-	-10	-5	-9	-	-
HF	-	-	-	-9	+5	-
UHF	-	-	-	-10	+8	-

see attached parts list
for part numbers.

ITEM	PART NO.	DESCRIPTION	QTY	REMARKS
BILL OF MATERIAL				
<small>UNIT 134 shall mean all units of the same description and all parts thereof and shall be 20% in excess of the unit quantity shown in this list.</small> TOLEANCES: UNLESS OTHERWISE SPECIFIED: RESISTORS: ±1% (1% tolerance) CAPACITORS: ±5% (5% tolerance) INDUCTORS: ±5% (5% tolerance)				
<small>ALL DIMENSIONS ARE IN MILLIMETERS UNLESS OTHERWISE SPECIFIED.</small> ALL DIMENSIONS ARE TO CENTER UNLESS OTHERWISE SPECIFIED. ALL DIMENSIONS ARE TO CENTER UNLESS OTHERWISE SPECIFIED.				
ITEM 3155 3155		SCHEMATIC, 3155 61028-01		

61028-01

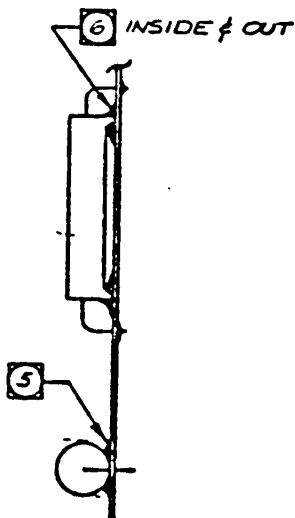
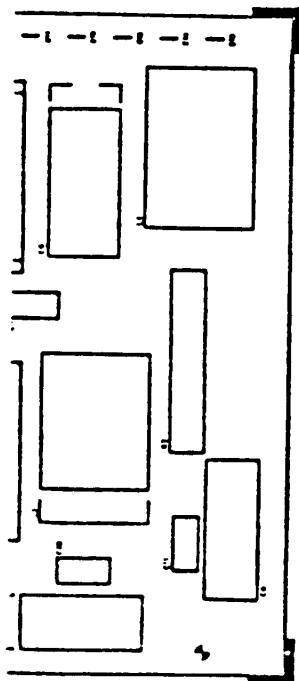
A

21014-0204.

62979

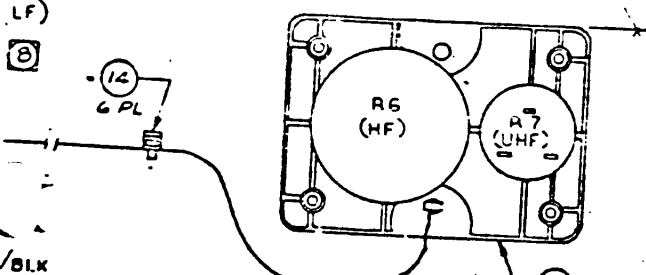
CHG	LTR	DESCRIPTION	DRFT	CHK	DATE	APPR
10167	A	MFG PROTOTYPE RUN NO. 1	new	L.H.	2-27-61	100 5/5
136	B	REV PER PDCN	22	J.H.	3-4-61	100 5/6
164	C	DEL. 59566S; 61631NAS 39334S; DELETE NOTE 3; ADDED NOTES 5&6 ADDED SIDE VIEW TO SHOW RESISTORS & CAPACITORS BOWED.		J.H.	4-14-61	100 5/6
140167	D	RELEASE FOR PROD.		J.H.	5-11-61	100 5/5
581E	E	CLARIFY ADHESIVE PLACENT		J.H.	8-27-61	65 3/27
610E	F	61014-00R4 WAS 61014-0R29 60990-02R0 DELETED; 60990-01R5, 27Y3, 29E6 WAS 21V2 C5C		I.M.	9-14-61	65 5/6
684E	G	ITEM B QTY 3 WAS QTY 2		J.H.	10-18-61	65 5/6

3/55
Page 2 of 3



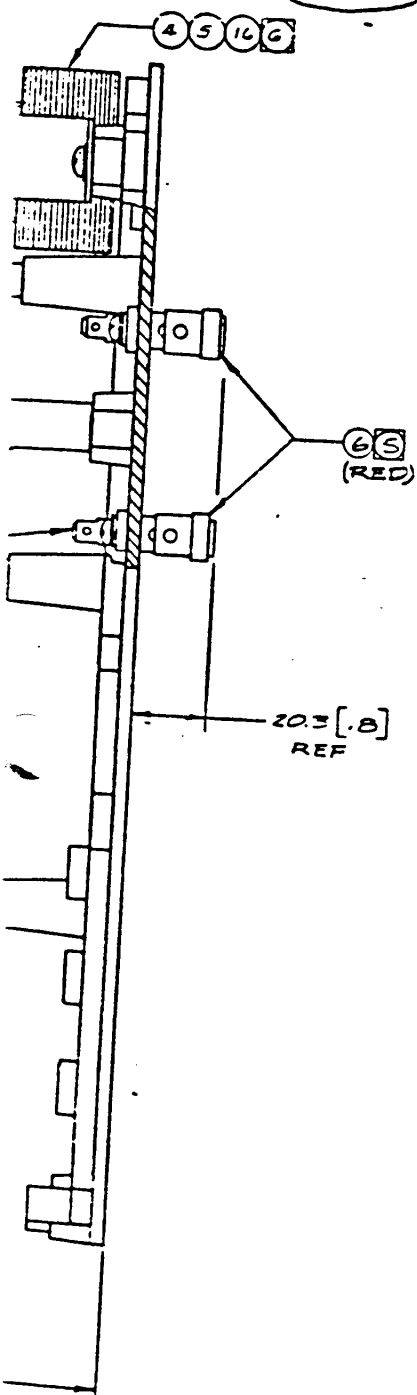
17				
16				
15	61631	ADHESIVE/SEALANT		N/R
14	20438S	SOLDER		N/R
13	6028S	TERMINAL, MALE	15	E1-15
12	51430	JUMPER, CIRCUIT		2
11	60791-0200	RESISTOR, WW - 20 Ω, 10W, 10%	1	R2
10	60791-0820	RESISTOR, WW - 82 Ω, 10W, 10%	4	R1,3,4,5
9	6104S	CAPACITOR, POLYPROP. .001 μF, 200V	5	C7-11
8	60440-01R5	CAPACITOR, MYLAR - 1.5 μF, 200V	3	C4,5,6
7				
6	60940-01B0	CAPACITOR, MYLAR - 1B μF, 200V	1	C1
5	60990-05R0	CAPACITOR, MYLAR - 8 μF, 200V	1	C2
4	61014-00R4	INDUCTOR - 0.4 mH	1	L3
3	61018-0R16	INDUCTOR - 0.16 mH	1	L4
2	61020-01R0	INDUCTOR - 1.0 mH	1	L2
1	61004	PCB	1	
ITEM	PART NO.	DESCRIPTION	QTY	REMARKS

BILL OF MATERIAL			
<small>UNLESS OTHERWISE SPECIFIED DIMENSIONS ARE IN MILLIMETERS, UNLESS SPECIFIED IN BRACKETS BREAK SHARP TOGETHER 24 mm DIA MAX</small> TOLERANCES UNLESS OTHERWISE SPECIFIED DECIMALS ANGLES .000 - 0.12 0.1-30 deg .001 - 0.25 0.10-60 deg .002 - 0.5 0.10-90 deg FRACTIONAL U.S. DIMENSIONS . . . 32 ALL DIMENSIONS ARE FINISHED DIMENSIONS DO NOT SCALE DRAWING		MATERIAL: 1 FINISH: 4 MODEL: 3155 SIZE: 1 DATE: 11/1/61 BY: J.H.	DRAWN: J.H. CHECKED: J.H. DATE: 11/1/61 DESIGN: J.H. APPROVED: J.H. DATE: 11/1/61 BY: J.H.
JAMES B. LANSING SOUNDING INC. 1400 S. GARDNER ST. CHICAGO, ILL. 60607 U.S.A.		PCB ASSY DRAWING NO: A1 61027 SHEET 1 OF 1	



REV	DESCRIPTION	DRFT	CHK	DATE	APPR
1	MFG PRODUCTION RUN NO.				
2	REV PER POON				
16A	REV PER POON				
126	REV PER POON				
126	RELEASE FOR PROD.				
143E	REV PER DCR (WIRE LENGTH)				
747E	57173-03 WAS 57177-03				

3155
Page 3 of 3



ITEM	PART NO.	DESCRIPTION	QTY	REMARKS
34	61179	WIRE & CONNECTOR ASSY	1	
33	57173-03		1	57173
32	61177		1	
31	61176		1	
30	61175		1	
29	61174		1	
28	61173		1	
27	61172		2	
26	61171		2	
25	61170		1	
24	61165		1	
23	61164		1	
22	61163		1	
21	57173-06		1	
20	57173-05		1	
19	57173-04		1	
18	61155	WIRE & CONNECTOR ASSY	1	
17	294745	SOLDER	2	57173
16	61628	VIBRATION PAD	1	
15	61097	SPACER	1	
14	353538	CABLE TIE, NYLON	1	
13	10048	WASHER, LOCK, EXT., NO. 8	6	
12	10049	WASHER, LOCK, EXT., NO. 6	2	
11	61139	SCREW, 8 X 2, TYPE AB, PNH	4	
10	10835	SCREW, 6-32 X 1/16, PNH	1	
9	61144	SCREW, 8 X 3/16, TYPE AB, PNH	4	
8	61141	TERMINAL, MALE	8	
7	33751	BINDING POST, BLACK	4	
6	33750	BINDING POST, RED	2	E102, 104
5	61013-01	STRAP, INDUCTOR	2	E101, 103
4	61005-02	INDUCTOR, 2.4 mH	1	
3	61027	PCB ASSY	1	L101
2	61025-01	L-PAD ASSY	1	A1
1	61007-02	PANEL, MTS	1	A2

ITEM		PART NO.	DESCRIPTION	QTY	REMARKS
BILL OF MATERIAL					
<small>UNLESS OTHERWISE SPECIFIED DIMENSIONS ARE IN MILLIMETERS BY THE NUMERICAL VALUE ON DRAWING'S BREAK SHARP EDGES 0.4 mm .016 inch</small> TOLERANCES UNLESS OTHERWISE SPECIFIED <small>IN CHAMFERS</small> .3 X .3 ± .015 .005 inch .5 X .5 ± .025 .010 inch .8 X .8 ± .030 .010 inch FRACTIONAL U.S. DIMENSIONS = 1:32 ALL DIMENSIONS ARE FINISH DIMENSIONS DO NOT SCALE DRAWING		MATERIAL: NOTED FINISH: _____ MOD. DIRECTION: SEE		DRAWN: 10/20 CHECKED: 10/20 DESIGN: _____ ENG: _____ APP: _____ SCALE: NONE SHEET: 1 OF 1	
JAMES B. LANSING SOUND, INC. <small>A Division of International Company 14711 York California 91329 U.S.A.</small>					
MFD ITEM, 3155					
A1 DRAWING NO. 61028				F	